

$$2x + 1 \leq 5x - 8$$

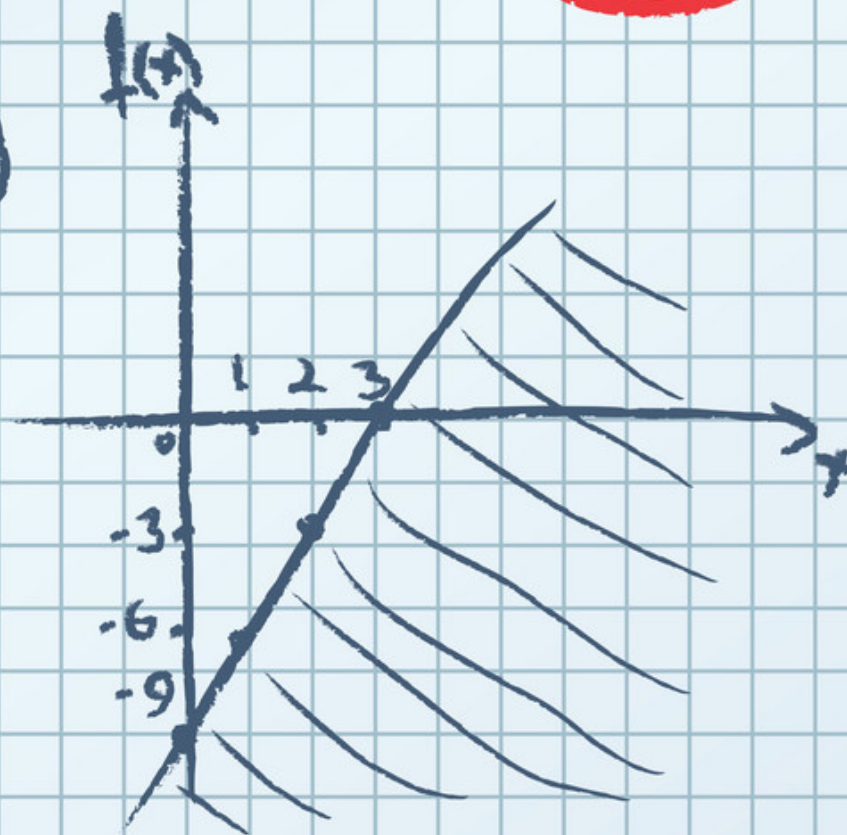
$$2x - 5x \leq -8 - 1$$

$$-3x \leq -9 \quad | \cdot (-1)$$

$$3x \geq 9$$

$$x \geq \frac{9}{3}$$

$$x \geq 3$$



Solution set: $\{x \in \mathbb{R}, x \geq 3\} = [3, \infty)$

STN